



Presentation to the House Select Committee on Strategic Transportation
Planning and Long Term Funding Solutions
February 22, 2016

Jay Stem, P.E. – Executive Director

Tom Carroll – Director, Business Development and External Affairs for
Vulcan Materials Company, Winston-Salem

President of NC Aggregates Association

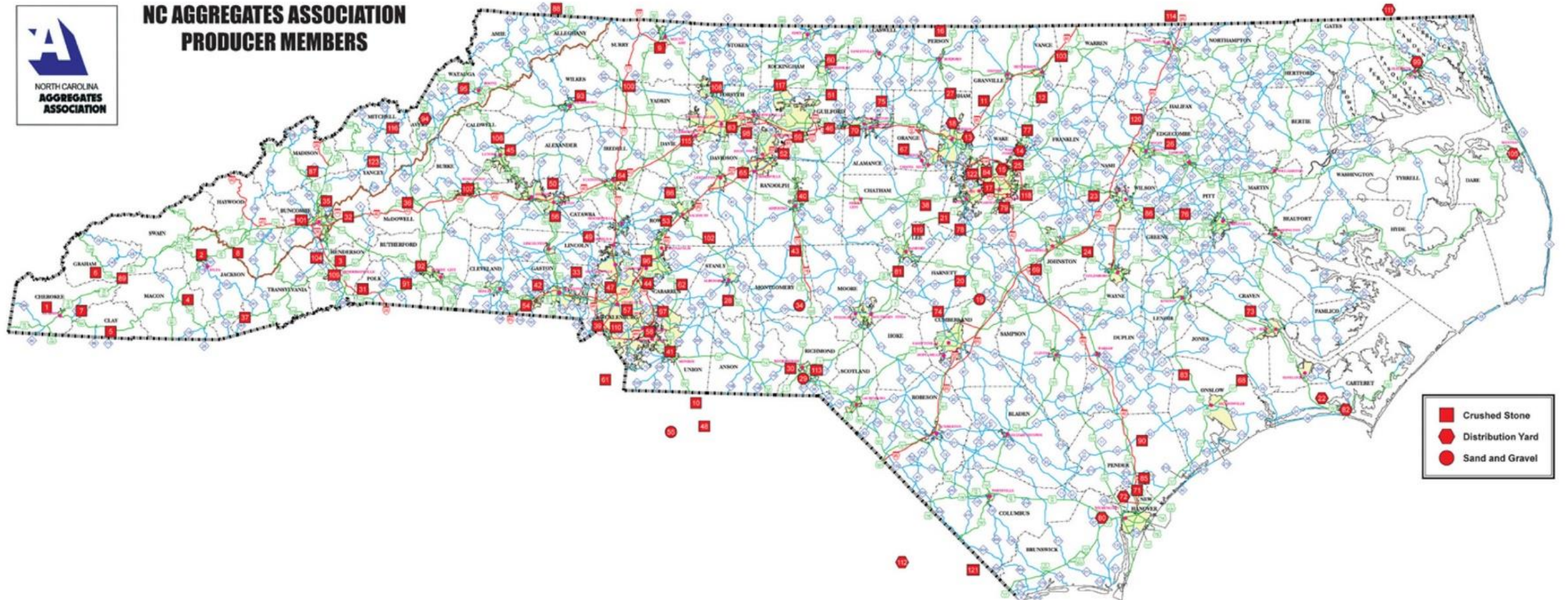


- A State Trade Association that represents companies in the production of crushed stone, sand and gravel.
- Members include large multi state corporations and family owned businesses
- Founded in 1964

Our members have 123 sites that supply aggregates to NC projects



NC AGGREGATES ASSOCIATION PRODUCER MEMBERS





Our material is used in other construction products

- Concrete – 80% Aggregates
- Asphalt – 95% Aggregates

1 mile of typical 4 lane interstate highway with aggregate base requires
38,000 tons of aggregate

Approximately 10 tons of aggregate are required annually for each NC
citizen



- Balance Monthly Highway Lettings
- Utility Conflicts
- Design Projects with Locally Available Materials
- Alternate Pavement Designs
- 24 – 26 Month List of Anticipated Projects
- E-Procurement



Industry / NCDOT Relationship

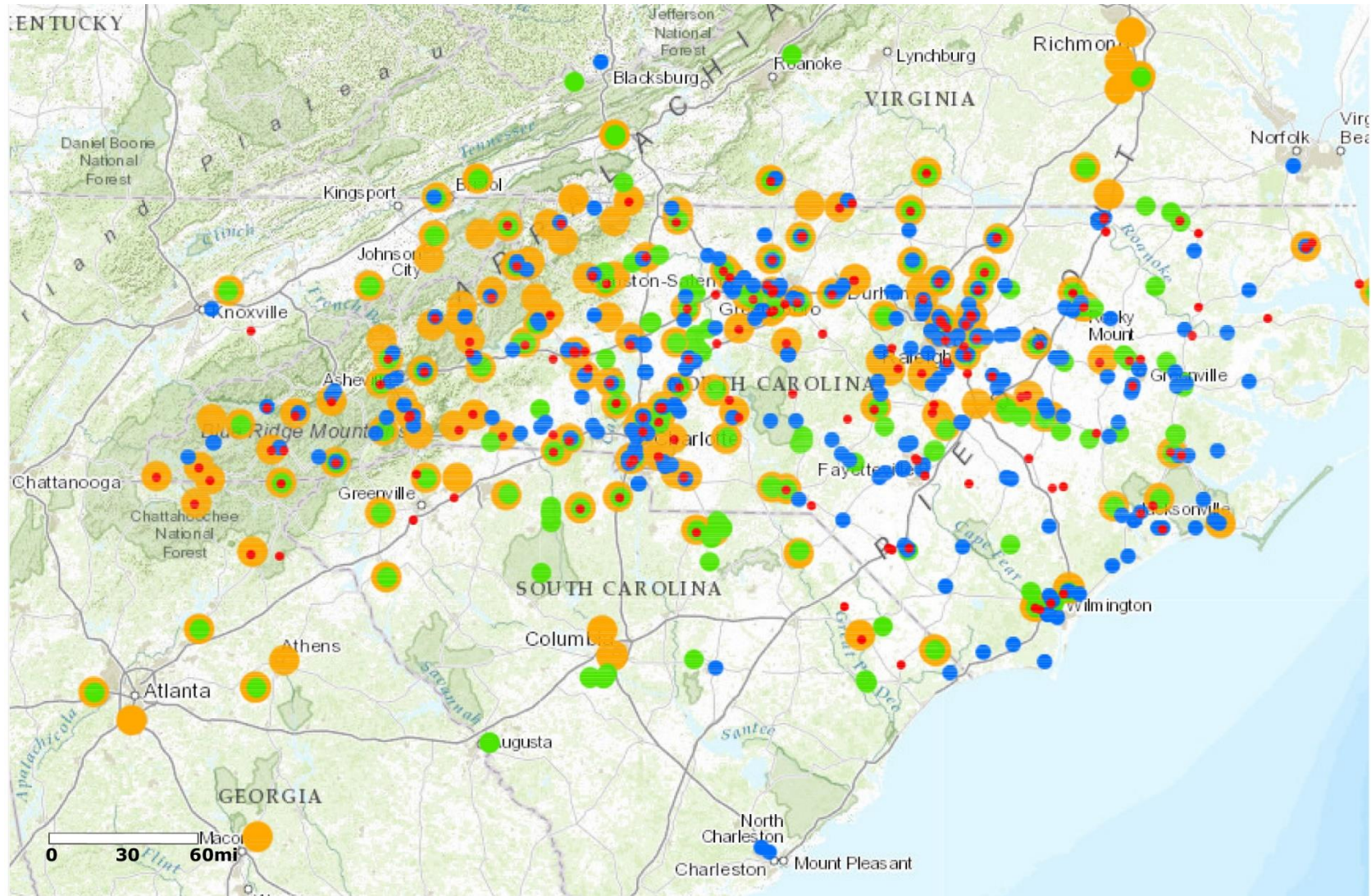
- Materials and Tests Unit
- Construction Unit
- Chief Engineer

NCDOT Periodically Attends Association Committee Meetings to Inform the Industry and Discuss Current Issues

Quarry Summits

Division Meetings

NC DOT Interactive Map





Contact Information

3700 National Drive, Suite 210

Raleigh, NC 27612

(919) 782-7055

ncaa@ncaggregates.org

www.ncaggregates.org